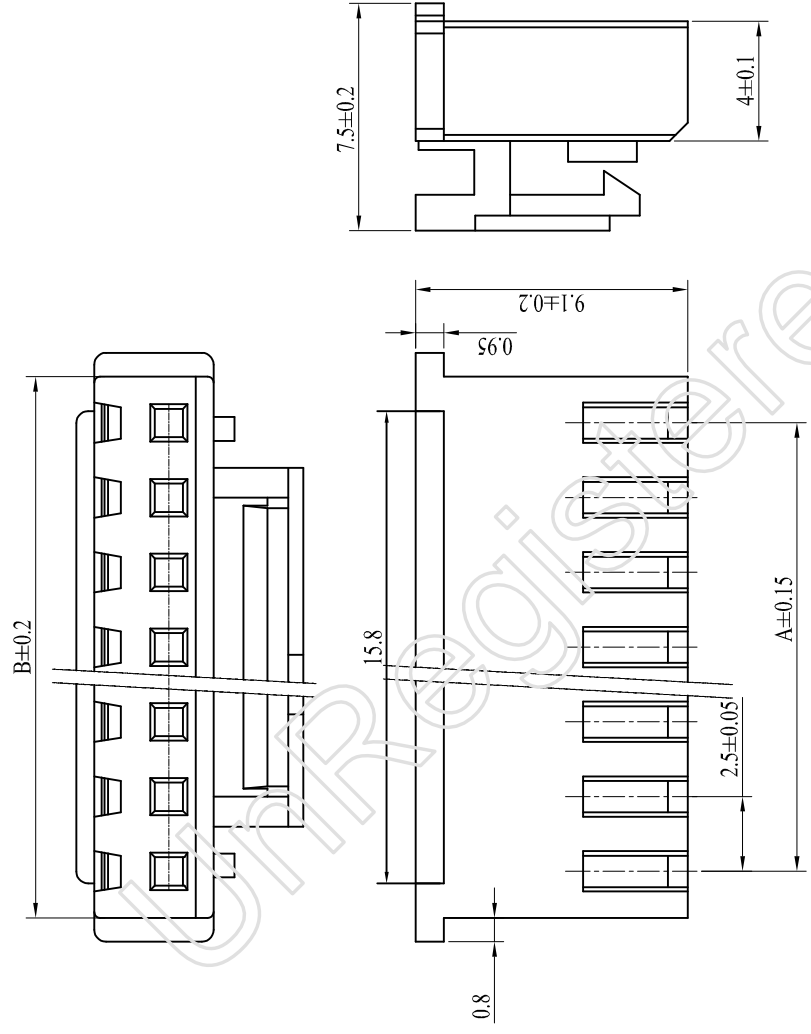


A B C D E

孔数	A	B
2	2.5	5.7
3	5.0	8.2
4	7.5	10.7
5	10.0	13.2
6	12.5	15.7
7	15.0	18.2
8	17.5	20.7
9	20.0	23.2
10	22.5	25.7
11	25.0	28.2
12	27.5	30.7
13	30.0	33.2
14	32.5	35.7
15	35.0	38.2



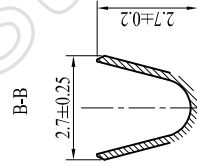
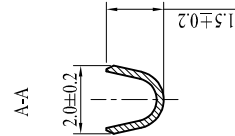
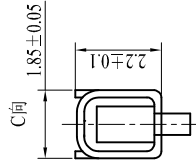
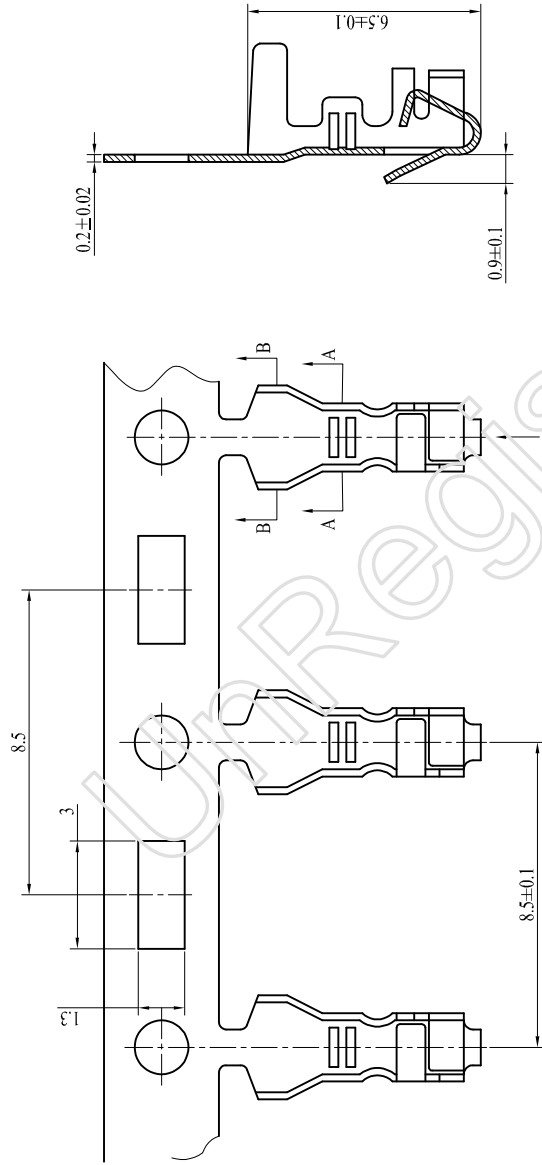
- 技术参数 (SPECIFICATIONS)
  - ◆ 额定电压: 250V AC DC  
Voltage rating: 250V AC DC
  - ◆ 额定电流: 3.0A AC DC MIN  
Current rating: 3.0A AC DC MIN
  - ◆ 耐压值: 1000V AC/minute  
Withstand voltage: 1000V AC/minute
  - ◆ 绝缘电阻: 1000MΩ MIN  
Insulation resistance: 1000MΩ MIN
  - ◆ 接触电阻: 20mΩ MAX  
Contact resistance: 20mΩ MAX
  - ◆ 工作温度: -25°C ~ +85°C  
Working Temperature: -25°C ~ +85°C
  - ◆ 间距: 2.5 mm  
Pitch: 2.5 mm
- 材料 (MATERIAL)
  - ◆ 外壳: 尼龙66  
Housing: Nylon66

LHF 东莞市连海电子有限公司  
DONG GUAN LIAN HAI ELECTRONICS CO., LTD

DRAW NO.	MODEL NO	DATE	DRAW NAME
DESIGN:	P/N NO:	周涛	XH2.5 带扣HSG-NP
CHECK	A2501-HA-NP		
REVIEW:	REV C	SCALE 1:1	UNIT: SHEET: 1 OF 1

DIM	TOL	DIM	TD
X.X	±0.15	X.X*	±2*
XXX	±0.10	X.XX*	±1*
XXXX	±0.05	X.XXX*	±1*

A B C D E



- 技术参数 (SPECIFICATIONS)
- ◆ 额定电压: 250V AC DC  
Voltage rating: 250V AC DC
  - ◆ 额定电流: 3.0A AC DC MIN  
Current rating: 3.0A AC DC MIN
  - ◆ 耐压值: 1000V AC/minute  
Withstand voltage: 1000V AC/minute
  - ◆ 绝缘电阻: 1000MΩ MIN  
Insulation resistance: 1000MΩ MIN
  - ◆ 接触电阻: 20mΩ MAX  
Contact resistance: 20mΩ MAX
  - ◆ 工作温度: -25°C ~ +85°C  
Working Temperature: -25°C ~ +85°C
  - ◆ 间距: 2.5 mm  
Pitch: 2.5 mm
- 材料 (MATERIAL)
- ◆ 端子: 磷青铜  
Terminal: Phosphor Bronze

2

3

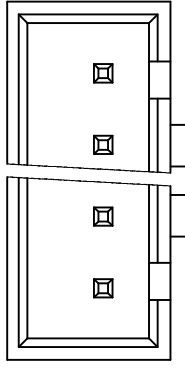
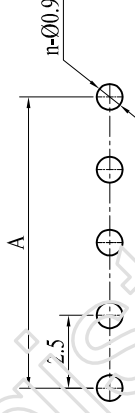
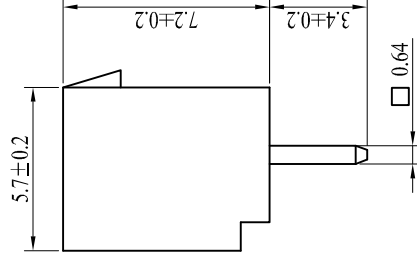
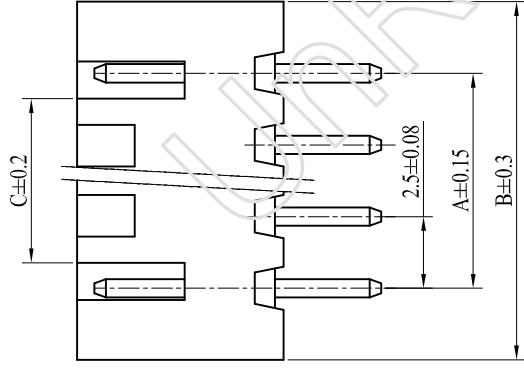
LHF 东莞市连海电子有限公司 DONG GUAN LIAN HAI ELECTRONICS CO. LTD		DRAW NAME	
MODEL NO:	A2501-TA	DATE:	周涛
P/N NO:		DESIGN:	
REV C	SCALE 1:1	CHECK:	
		REVIEW:	

DIM	TOL	DIM	TO
X	/	X	/
XX	±0.15	XX*	±2*
XXX	±0.10	XXX*	±1*
XXXX	±0.05	XXXX*	/

UNIT: SHEET	mm	1	DF1
-------------	----	---	-----

A B C D E

A B C D E



PCB LAYOUT

■ 技术参数 (SPECIFICATIONS)

- ◆ 额定电压: 250V AC DC  
Voltage rating: 250V AC DC
- ◆ 额定电流: 3.0A AC DC MIN  
Current rating: 3.0A AC DC MIN
- ◆ 耐压值: 1000V AC/minute  
Withstand voltage: 1000V AC/minute
- ◆ 绝缘电阻: 1000MΩ MIN  
Insulation resistance: 1000MΩ MIN
- ◆ 接触电阻: 20mΩ MAX  
Contact resistance: 20mΩ MAX
- ◆ 工作温度: -25°C~+85°C  
Working Temperature: -25°C +85°C
- ◆ 间距: 2.5 mm  
Pitch: 2.5 mm

■ 材料 (MATERIAL)

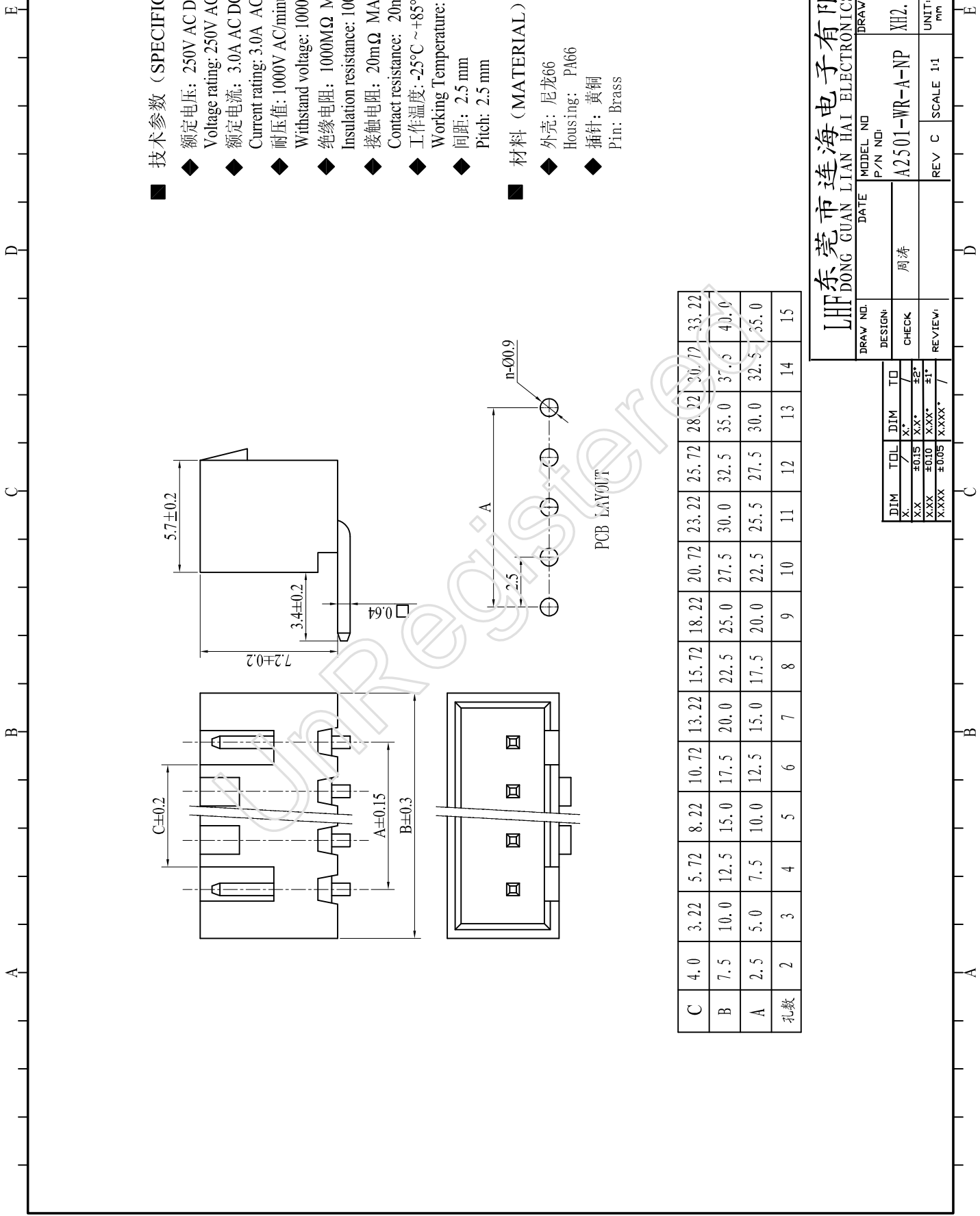
- ◆ 外壳: 尼龙66  
Housing: PA66
- ◆ 插针: 黄铜  
Pin: Brass

C	4.0	3.22	5.72	8.22	10.72	13.22	15.72	18.22	20.72	23.22	25.72	28.22	30.72	33.22
B	7.5	10.0	12.5	15.0	17.5	20.0	22.5	25.0	27.5	30.0	32.5	35.0	37.5	40.0
A	2.5	5.0	7.5	10.0	12.5	15.0	17.5	20.0	22.5	25.5	27.5	30.0	32.5	35.0
孔数	2	3	4	5	6	7	8	9	10	11	12	13	14	15

LHF 东莞市连海电子有限公司  
DONG GUAN LIAN HAI ELECTRONICS CO. LTD

DRAW NO.	MODEL NO.	DATE	DRAW NAME
	P/N NO.		
	A2501-WV-A-nP	周涛	XH2.5 带扣180度WF-nP
DESIGNER	CHECK	REVIEWER	UNIT: SHEET
			mm 1 OF 1
REV C	SCALE 1:1		

DIM	TOL	DIM	TOL
X.	/	X.	/
X.X	±0.15	X.X*	±2*
X.XX	±0.10	X.XX*	±1*
X.XXX	±0.05	X.XXX*	/



■ 技术参数 (SPECIFICATIONS)

- ◆ 额定电压: 250V AC DC  
Voltage rating: 250V AC DC
- ◆ 额定电流: 3.0A AC DC MIN  
Current rating: 3.0A AC DC MIN
- ◆ 耐压值: 1000V AC/minute  
Withstand voltage: 1000V AC/minute
- ◆ 绝缘电阻: 1000MΩ MIN  
Insulation resistance: 1000MΩ MIN
- ◆ 接触电阻: 20mΩ MAX  
Contact resistance: 20mΩ MAX
- ◆ 工作温度: -25°C~+85°C  
Working Temperature: -25°C ~ +85°C
- ◆ 间距: 2.5 mm  
Pitch: 2.5 mm

■ 材料 (MATERIAL)

- ◆ 外壳: 尼龙66  
Housing: PA66
- ◆ 插针: 黄铜  
Pin: Brass

C	4.0	3.22	5.72	8.22	10.72	13.22	15.72	18.22	20.72	23.22	25.72	28.22	30.72	33.22
B	7.5	10.0	12.5	15.0	17.5	20.0	22.5	25.0	27.5	30.0	32.5	35.0	37.5	40.0
A	2.5	5.0	7.5	10.0	12.5	15.0	17.5	20.0	22.5	25.5	27.5	30.0	32.5	35.0
孔数	2	3	4	5	6	7	8	9	10	11	12	13	14	15

LHF 东莞市连海电子有限公司  
DONG GUAN LIAN HAI ELECTRONICS CO. LTD

DRAW NO:	MODEL NO:	DATE:	P/N NO:	DRAW NAME:
DESIGN:	A2501-WR-A-NP	周涛		XH2.5 带扣90度WF-NP
CHECK:	REV C		SCALE 1:1	UNIT: SHEET
REVIEW:				mm 1 OF 1

DJM	TOL	DIM	TD
X	/	X	/
XX	±0.15	XX*	±2°
XXX	±0.10	XXX*	±1°
XXXX	±0.05	XXXX*	/

PCB LAYOUT