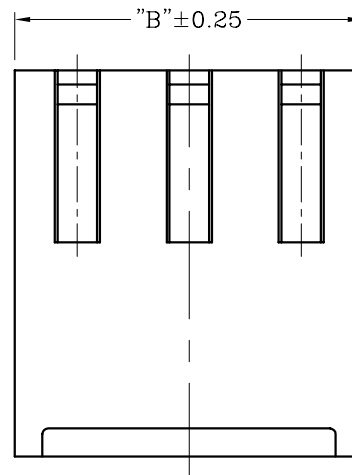
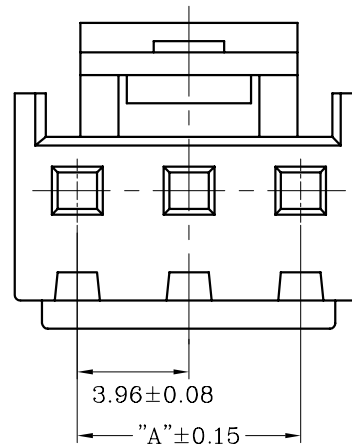
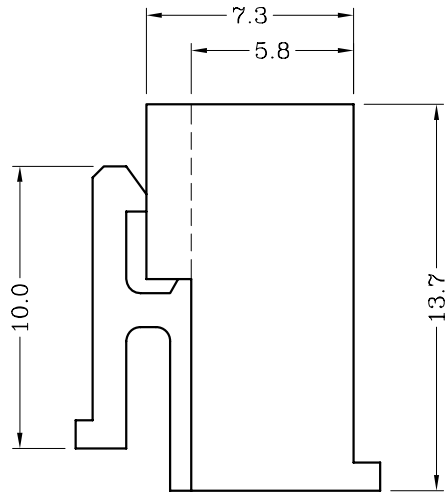


	DIM.A	DIM.B
2	3.96	8.40
3	7.92	12.36
4	11.88	16.32
5	15.84	20.28
6	19.80	24.24
7	23.76	28.20
8	27.72	32.16
9	31.68	36.12
10	35.64	40.08
11	39.60	44.04
12	43.56	48.00
13	47.52	51.96
14	51.48	55.92
15	55.44	59.88



■ 技术参数 SPECIFICATIONS

- ◆ 适用线规: AWG#18~#22
Applicable Wire: AWG#18~#22
- ◆ 额定电压: 250V DC,AC(rms)
Rated voltage: 250V DC,AC(rms)
- ◆ 额定电流: 7A
Rated Current: 7A
- ◆ 耐压值: 1500V AC/minute
Withstand voltage: 1500V AC/min.
- ◆ 工作温度: -25°C ~ +85°C
Working Temp : -25°C ~ +85°C
- ◆ 绝缘电阻: ≥1000 MΩ
Insulation resistance: ≥1000 MΩ
- ◆ 接触电阻: ≤10 mΩ
Contact resistance: ≤10 mΩ

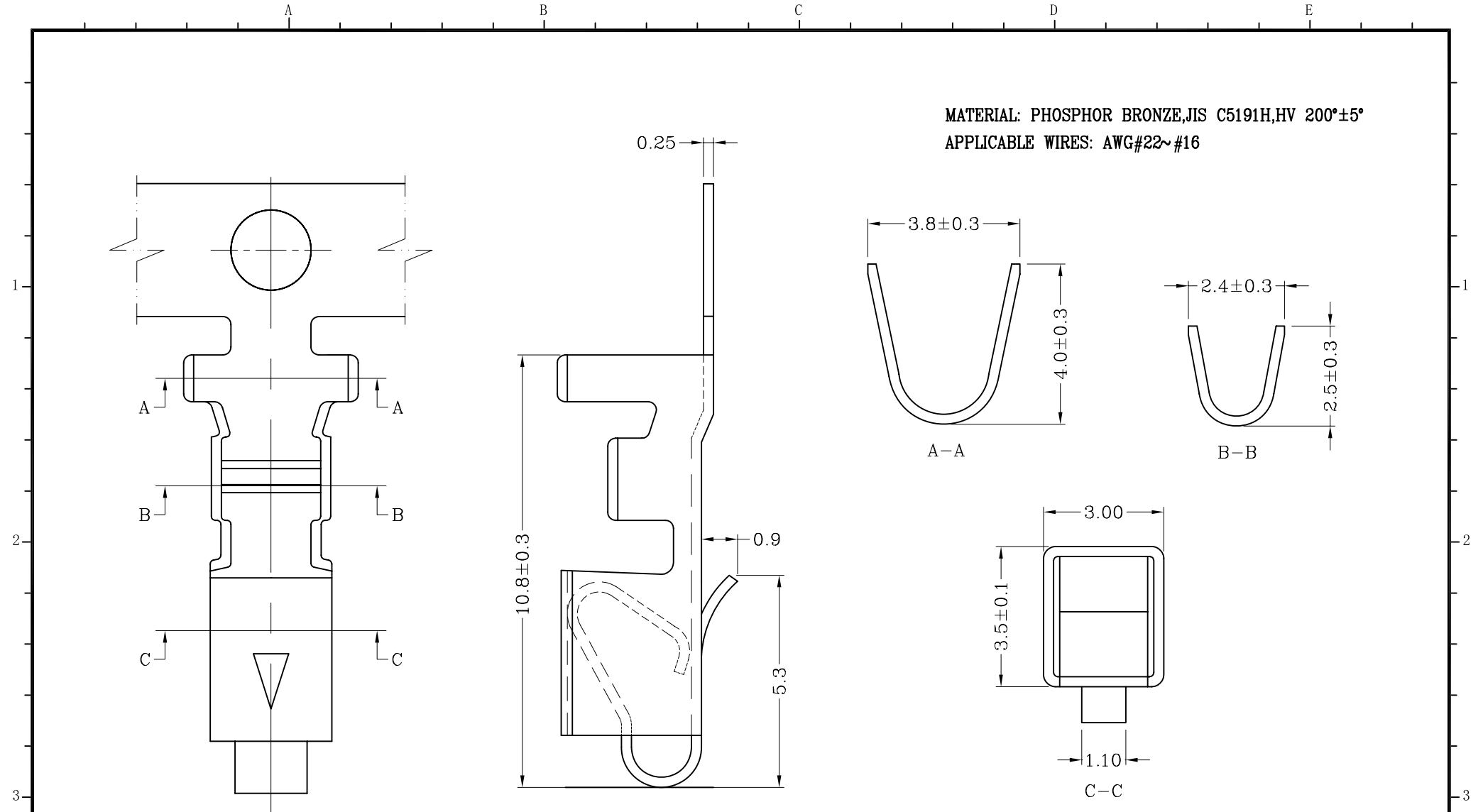
■ 材料 MATERIAL

- ◆ 胶壳: 尼龙66, UL94-V0
Housing: Nylon66, UL94-V0

LHF 东莞市连海电子有限公司
DONG GUAN LIAN HAI ELECTRONICS CO.LTD

DRAW NO.	DATE	MODEL NO P/N NO:	DRAW NAME
DESIGN:	周涛	A3961-H-NP	VH3.96 HSG-NP
CHECK			
REVIEW:	刘丽娜	REV C	SCALE 1:1
		UNIT: mm	SHEET: 1 OF 1

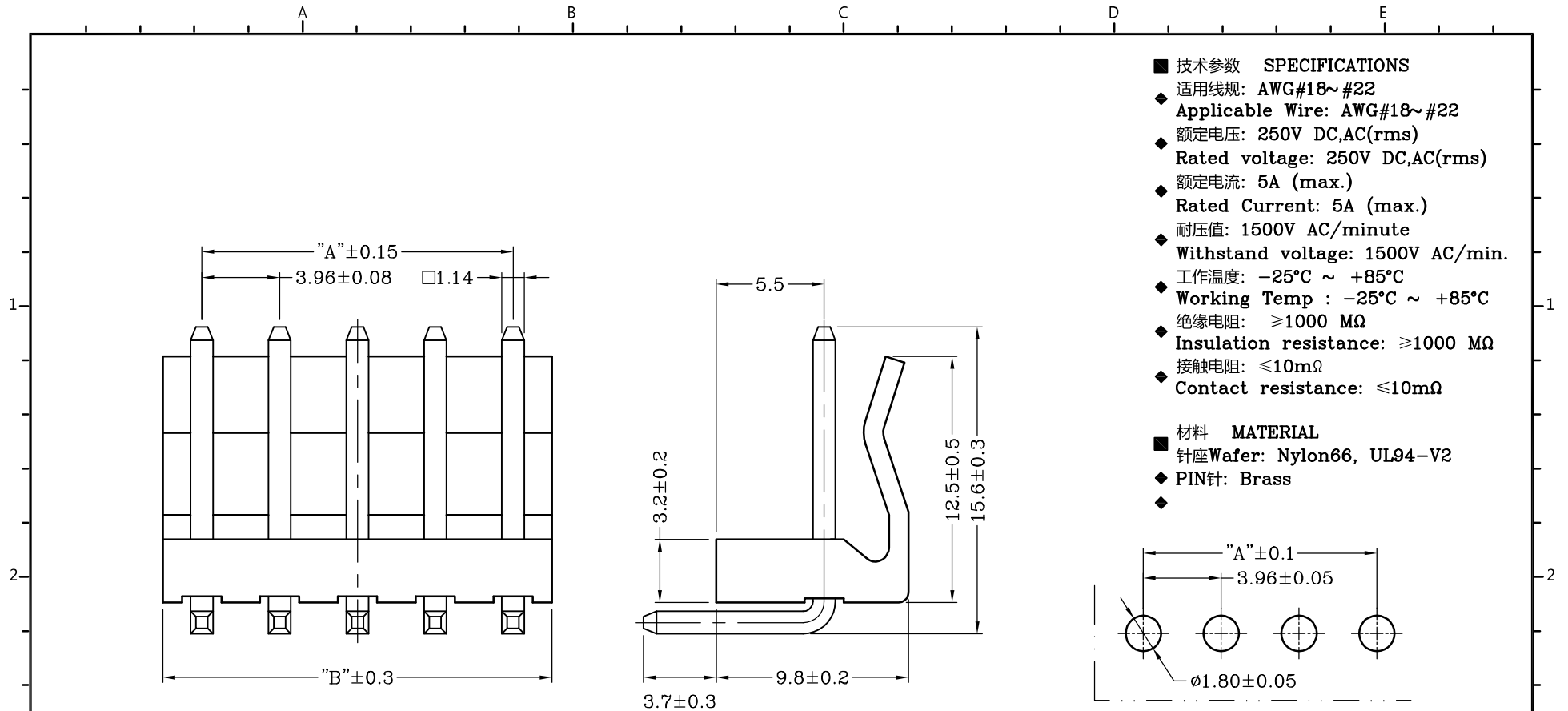
DIM	TOL	DIM	TOL
X.	/	X.*	/
X.X	±0.15	X.X*	±2*
X.XX	±0.10	X.XX*	±1*
X.XXX	±0.05	X.XXX*	/



LHF 东莞市连海电子有限公司
 DONG GUAN LIAN HAI ELECTRONICS CO. LTD

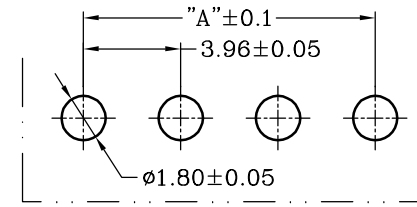
DRAW NO.	DATE	MODEL NO	DRAW NAME
DESIGN:		P/N NO:	VH3.96 镀锡端子
CHECK:	周涛	A3961-T	
REVIEW:	刘丽娜	REV C	SCALE 1:1
		UNIT: mm	SHEET: 1 OF 1

DIM	TOL	DIM	TOL
X		X*	
X.X	± 0.15	X.X*	$\pm 2^\circ$
X.XX	± 0.10	X.XX*	$\pm 1^\circ$
X.XXX	± 0.05	X.XXX*	/



- 技术参数 SPECIFICATIONS
 ◆ 适用线规: AWG#18~#22
 Applicable Wire: AWG#18~#22
 ◆ 额定电压: 250V DC,AC(rms)
 Rated voltage: 250V DC,AC(rms)
 ◆ 额定电流: 5A (max.)
 Rated Current: 5A (max.)
 ◆ 耐压值: 1500V AC/minute
 Withstand voltage: 1500V AC/min.
 ◆ 工作温度: -25°C ~ +85°C
 Working Temp : -25°C ~ +85°C
 ◆ 绝缘电阻: ≥1000 MΩ
 Insulation resistance: ≥1000 MΩ
 ◆ 接触电阻: ≤10mΩ
 Contact resistance: ≤10mΩ

- 材料 MATERIAL
 ◆ 针座Wafer: Nylon66, UL94-V2
 ◆ PIN针: Brass



P.C.B LAYOUT

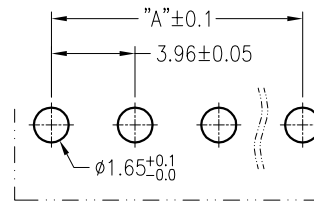
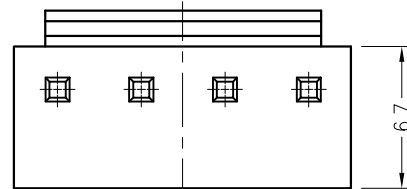
	2P	3P	4P	5P	6P	7P	8P	9P	10P	11P	12P	13P	14P	15P	16P
DIM.A	3.96	7.92	11.88	15.84	19.80	23.76	27.72	31.68	35.64	39.60	43.56	47.52	51.48	55.44	59.40
DIM.B	7.92	11.88	15.84	19.80	23.76	27.72	31.68	35.64	39.60	43.56	47.52	51.48	55.44	59.40	63.36

LHF 东莞市连海电子有限公司
 DONG GUAN LIAN HAI ELECTRONICS CO. LTD

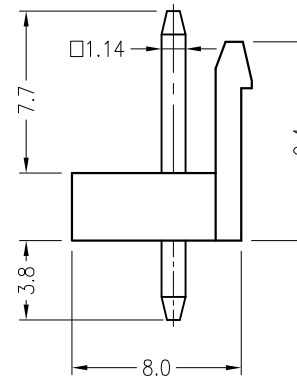
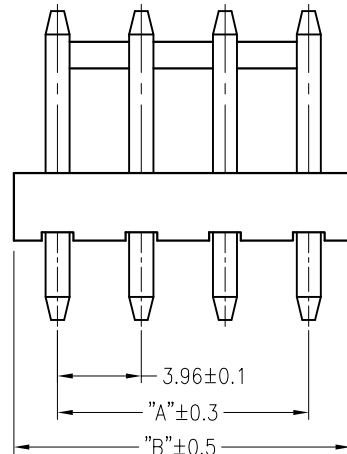
DRAW NO.	DATE	MODEL NO	DRAW NAME
DESIGN:		P/N NO:	VH3.96 90度WF-NP
CHECK:	周涛	A3961-WR-NP	
REVIEW:	刘丽娜	REV C	SCALE 1:1

DIM	TOL	DIM	TOL
X.	±0.15	X.*	±0.2
X.X	±0.10	X.X*	±0.15
X.XX	±0.05	X.XX*	±0.10
X.XXX	±0.025	X.XXX*	±0.05

Poles	DIM.A	DIM.B
2P	3.96	8.02
3P	7.92	11.98
4P	11.88	15.94
5P	15.84	19.90
6P	19.80	23.86
7P	23.76	27.82
8P	27.72	31.78
9P	31.68	35.74
10P	35.64	39.70
11P	39.60	43.66
12P	43.56	47.62



P.C.B LAYOUT



■ 技术参数 SPECIFICATIONS

- ◆ 适用线规: AWG#18~#22
Applicable Wire: AWG#18~#22
- ◆ 额定电压: 250V DC/AC(rms)
Rated voltage: 250V DC/AC(rms)
- ◆ 额定电流: 7A
Rated Current: 7A
- ◆ 耐压值: 1500V AC/minute
Withstand voltage: 1500V AC/min.
- ◆ 工作温度: $-25^{\circ}\text{C} \sim +85^{\circ}\text{C}$
Working Temp : $-25^{\circ}\text{C} \sim +85^{\circ}\text{C}$
- ◆ 绝缘电阻: $\geq 1000 \text{ M}\Omega$
Insulation resistance: $\geq 1000 \text{ M}\Omega$
- ◆ 接触电阻: $\leq 10 \text{ m}\Omega$
Contact resistance: $\leq 10 \text{ m}\Omega$

■ 材料 MATERIAL

- ◆ 绝缘体: 尼龙66, UL94-V2
Insulator: Nylon66, UL94-V2
- ◆ 接触针: 黄铜
Contact PIN: Brass

LHF东莞市连海电子有限公司
DONG GUAN LIAN HAI ELECTRONICS CO.LTD

DRAW NO.	DATE	MODEL NO	DRAW NAME
DESIGN:		P/N NO:	VH3.96 180度WF-NP
CHECK	周源	A3961-WV-NP	
REVIEW:	刘丽娜	REV C	SCALE 1:1
		UNIT: mm	SHEET: 1 OF 1

DIM	TOL	DIM	TOL
x.	/	x.*	/
x.x	± 0.15	x.xx*	$\pm 2^{\circ}$
x.xx	± 0.10	x.xxx*	$\pm 1^{\circ}$
x.xxx	± 0.05	x.xxx*	/